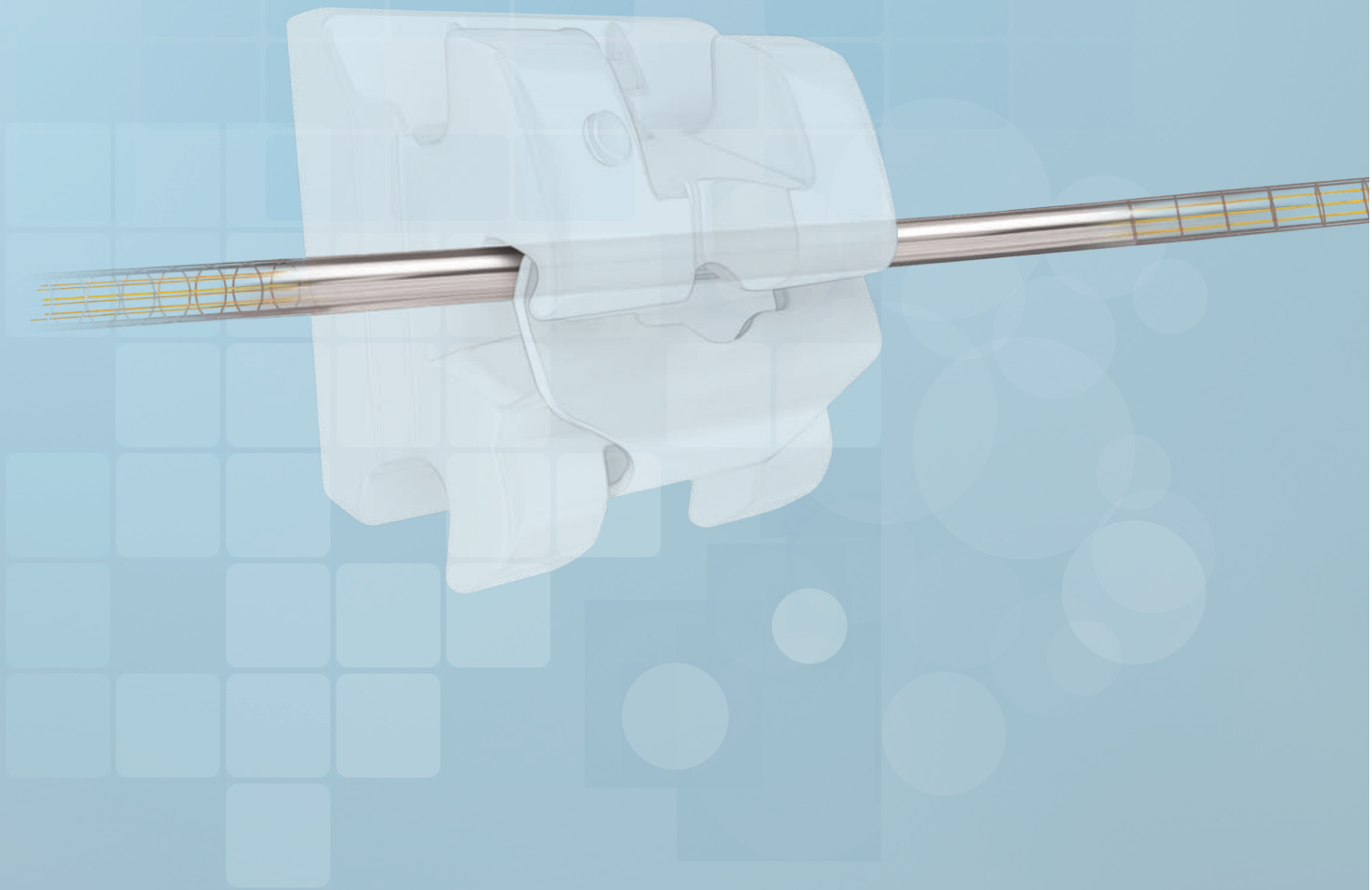


DENTSPLY GAC Archwire Collection

All the Metals that Matter



[GAC is Wired]

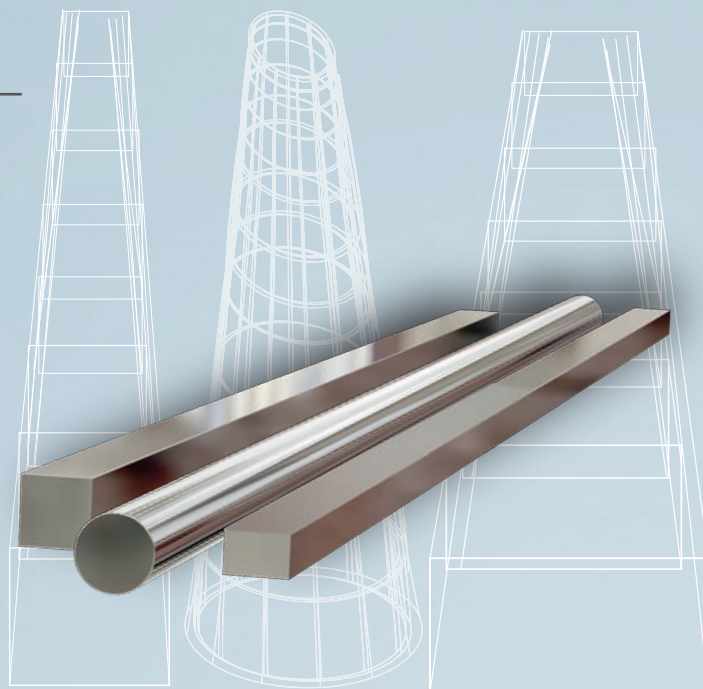
GAC is Wired

All the Metal That Matters

Copper to Nickel and All Points In-Between

Your choice in archwires is a critical decision in your quest for excellence. DENTSPLY GAC has been recognized as a pioneer, as well as a leader, in archwire technology for over 25 years. We offer a wide selection of high quality archwires designed to treat any situation.

Sentalloy® and BioForce® NiTi wires offer superelastic shape memory properties unparalleled in the industry. Our new Copperloy™ NiTi wire offers flexibility and performance and the flexible and smooth Nickel free Resolve® Beta titanium is manufactured in small batches to promote consistency and reduce breakage often associated with beta titanium archwires. We also offer a wide array of high quality stainless steel, keyhole looped and multi strand braided derivatives. Wherever your archwire needs take you, DENTSPLY GAC delivers a solution that you can be confident in.



DENTSPLY GAC Archwire Collection



For better dentistry

DENTSPLY
GAC

DENTSPLY GAC Nickel Titanium Wires

The Sentalloy wire family is designed to deliver a gentle, light continuous force to mitigate periodontal stress.

Unique Properties of Sentalloy Superelastic Wires

Body Heat Activation

At room temperature, Sentalloy wires are soft, pliable, and easy to engage. Once warmed to body temperature the wire gently and predictably guides the teeth to the present arch form.

Superelasticity

Even when severely malposed, Sentalloy continues to exert its gentle, near constant forces as the tooth moves.

Shape Memory Effect

Sentalloy will take displacements up to 90 degrees without deforming. Its overwhelming desire to return to its original shape actually promotes tooth movement with fewer wire changes and fewer patient visits.

Sentalloy Archwire Options:

Sentalloy: Round

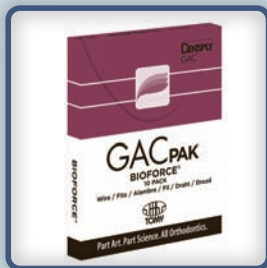
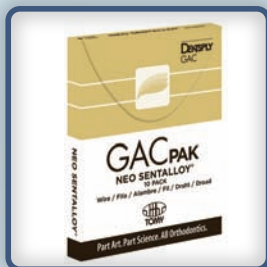
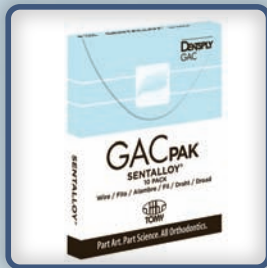
Initial archwire with body heat activation and true superelasticity with near constant forces.

Neo-Sentalloy: Square or Rectangular

Intermediate archwire with body heat activation and true superelasticity with near constant forces. Also available with IONGUARD.*

BioForce: Square or Rectangular

Optimally biological forces begin at approximately 80 grams of force at the anteriors, and gradually increase to approximately 300 grams of force in the molars. Also available with IONGUARD.*



* IONGUARD is not a coating; it is a fundamental change in the wire's surface. Without changing the wire's dimensions, or altering any of the wire's unique superelastic properties, the process produces sliding mechanics comparable to stainless steel, while sealing the occlusal surface to reduce nickel leaching and breakage.

New



DENTSPLY GAC Nickel Titanium Wires

Introducing Copperloy™ Nickel Titanium —The Nimble Copper Wire

The Copperloy family is designed to deliver a comfortable and efficient experience. The addition of copper enhances the thermal properties of the wire.

Unique Properties of Copperloy Superelastic Wires

Scientifically Proven

Precision engineered Copper NiTi allows the wire to express fast, consistent movement.

Consistent Performance

Achieve a steady, complete expression of force across all wire sizes for a more precise finishing point. Copper NiTi wires are also more resistant to permanent deformation.

Resists Breakage

Controlled load ranges to reduce breakage.

Easy Engagement

Due to low hysteresis, the smaller loading forces make wire engagement in the slot easier, even in severe cases. Available in a wide range of sizes, force levels and transformation temperatures. Midline etched and select sizes available with stops.

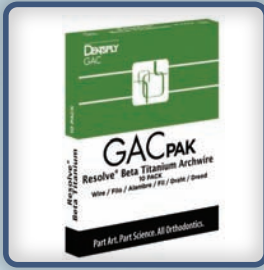


AccuForce™ and AccuForce™ G3

AccuForce is an economic option when looking for superelastic NiTi wires. These advanced superelastic and heat-activated archwires are available in round, square, and rectangular for all stages of treatment.

- Superelastic provides gentle, nearly constant forces.
- Shape memory effect provides an overwhelming desire to return to original shape.
- Heat activated are soft and pliable, easy to engage at room temperature, may be chilled for easier ligation.
- Optimal tooth movement and ideal biological forces in Accu-Force™ G3 wires.

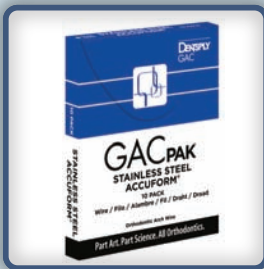
DENTSPLY GAC BetaTitanium Wires



Resolve® Beta Titanium Archwire

DENTSPLY GAC's Resolve Beta Titanium archwires are processed in smaller batches for greater consistency. Resolve contains no nickel that can cause allergic reactions in some patients. It can be used at any stage of treatment, but it is especially effective where moderate forces are necessary for early torque control and final detailing.

DENTSPLY GAC Stainless Steel Wires



Stainless Steel Archwires

DENTSPLY GAC's Stainless Steel wire is made from premium type 304 VAR steel. It's virtually free from imperfections that can cause brittleness and breakage. Our square, rectangular, and braided wires are shaped to the tightest standards, and laser monitored for total batch consistency. Available in soft, medium, and hard tempers.

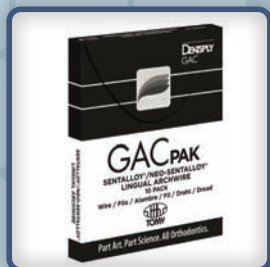


Multi-Strand Stainless Steel

Multi-Strand wires come in the greatest variety of stiffness to meet a wide variety of applications. All GAC Multi-Strand wires are formed from 304-VAR stainless steel containing 3 to 8 strands.

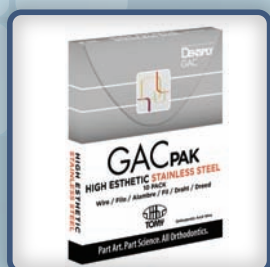
- WildCat® Wire - High-tempered 3 strand twisted wire
- TriCat Wire - Three twisted round wires
- Quad-Cat Wire - Pre-formed, 3 strand rectangular twisted wire
- PentaCat Wire - Coaxial wire, spooled or pre-formed, 5 strands
- HexaCat Wire - Six strand round, spooled coaxial wire
- Multi Braid Arches - Eight-strand braided edgewise wire
- WildCat Lingual Retainer Wire - Straight lengths, uniquely designed with a coarse finish

DENTSPLY GAC Specialty Wires



Lingual Archwires

DENTSPLY GAC's lingual archwires are available in Sentalloy, NeoSentalloy and Beta Titanium. These are wires that are recommended to be used with our lingual bracket lines, InOvation L and MTM No•Trace™. Wires are available in .012", .014", .016", .017" x .025" and .016" x .022".



High Esthetic Archwires

According to a recent patient survey by the American Journal of Orthodontics and Dentofacial Orthopedics, ceramic appliances with clear or white wires are rated consistently higher over their metal counterparts in terms of esthetics. This is a difference patients are willing to pay several hundred dollars for.

Crafted by a unique rhodium process, our High Esthetic archwires have a low-reflectivity surface for a soft, frosted appearance delivering the same outstanding properties and performance as their standard counterparts.



Coballoy Wire

Coballoy is an inexpensive, cobalt chromium alloy wire that is remarkably tough, yet it is more malleable than stainless steel. It can be heat treated for greater resiliency, or used without heat treatment. It can be welded or soldered and is ideal for wires that require complex bending.



Work-Hardened-NiTi Archwires

Lowland NiTi archwire features gentle, continuous forces for efficient tooth movement. Available in a wide selection of arch forms, these bendable NiTi wires provide an economical solution for a variety of application.



Double Keyhole Loop Retraction Steel Wire

DENTSPLY GAC's Double Keyhole Loop stainless steel archwires are used to gently close spaces with the ideal stiffness to maintain arch form. This wire is available in two millimeter increments from 22mm to 44mm, with two or four keyhole loops, as well as a kit containing 75 assorted sizes.



Brass Posted Archwire

Our Posted archwires combine the resiliency of stainless steel archwire with the malleability of brass for easy directional bending of the post. Available in .018" x .025" and .019" x .025", pack of 10 wires.



Retranol

Retranol, "The Bite Opener," reverse curve archwires, are produced from work hardened nickel titanium. This wire provides a greater working range than stainless steel wires and affords ideal dimensional stability to avoid "dumping" the anteriors during retraction. Opening the bite now requires less than half the time that was needed with stainless steel. Retranol also needs fewer archwire changes and adjustments. Throughout treatment, Retranol remains active without deforming.



Intranol CTA

The NiTi memory and force properties of Intranol CTA are excellent for incisor flaring, leveling anterior occlusal cants, molar tip back, correction of minor open bites, Class II molar correction, and finishing.

DENTSPLY GAC Archwire Collection

All the Metals that Matter

Your Source for All Things Orthodontic

DENTSPLY GAC is an institution that's founded on ideas and driven by ideals. We are committed to the idea of making great products for great practitioners. And we are dedicated to advancing the practice of orthodontics in all its forms. From brackets and bands, education and research, technology and progress and everything in between, we are here to help you deliver the highest standard of care possible. It's a mindset that's infused into everything that carries the DENTSPLY GAC name.

Part Art. Part Science. All Orthodontics.

©2013 DENTSPLY GAC Intl. All Rights Reserved 0280-MM-120-222-06 Rev. 01



For better dentistry
DENTSPLY
GAC

Rx
Only

CE
0120



Emergo Europe Molenstraat 15
2513 BH The Hague, Netherlands

DENTSPLY GAC
800.645.5530
www.newdentsplygac.com